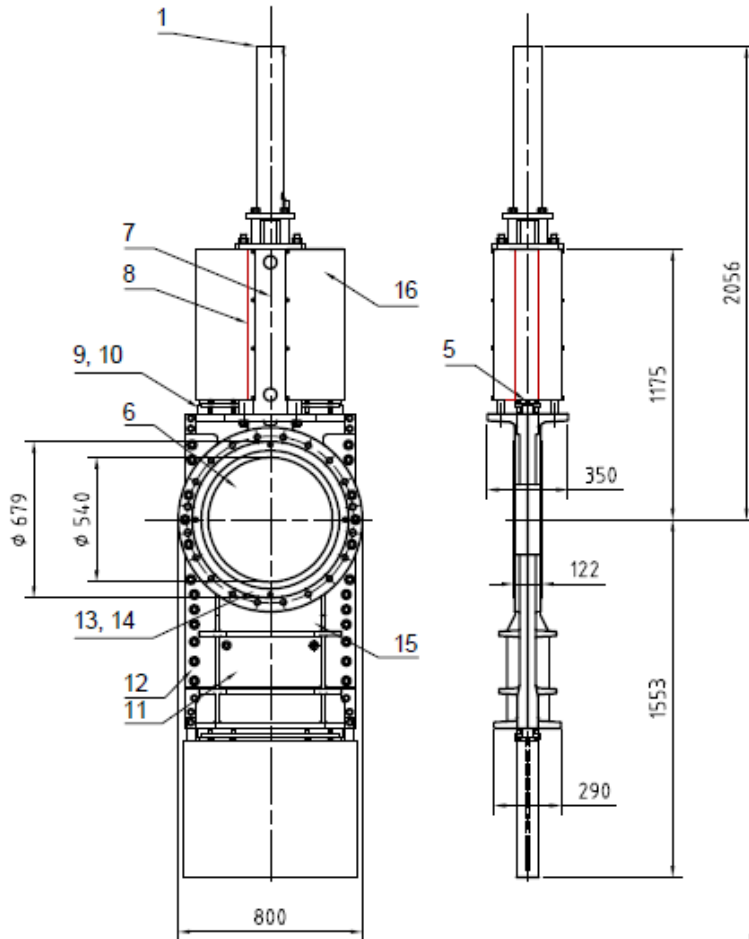


Downloaded by STAFSJÖ VALVE AB
 License: no restrictions other than those of our copyright database.
 (Licence of 25 m/100) STAFSJÖ VALVE AB

The download property of STAFSJÖ VALVE AB and shall not be used for any other commercial purpose.
 License of 25 m/100 STAFSJÖ VALVE AB



All specifications subject to change without notice.

Bill of Material:

Pos.	Detail	Material
1	Hydraulic Actuator	CDL1 MF3 Ø100
2		
3		
4		
5	Gate clevis	Stainless steel: SS 2346-02
6	Gate	Stainless steel: SS 2347
7	Beam	Aluminum: EN AW-6063-T6
8	Tie rod, beam	Stainless steel: SS 2333-02
9	Gland	Stainless steel: SS 2343
10	Packing	Twinpac pH 1-13 max. 260° C
11	Valve body	Cast Iron: GG20
12	House packing	PTFE
13	Retainer ring	Cast Iron: GG20
14	Seat	PTFE O-Ring Nitrile (P) max 100°C
15	Gliding pad	PTFE
16	Protection	Stainless steel: SS 2333-02

Measurements:

Bore:	A	540
Face to face:	B	122
Flange diameter:	C	679
Body width:	J	800
Yoke width:	D	350
Centre - Bottom:	F	1553
Centre - Top AC:	H	2056
Valve centre - Pillar top:	O	1175
Max. working pressure (MPa):		0.6
Weight (kg):		930

Flange drilling according to:	EN 1092, PN10
Bolt circle diameter:	725
No. of throughgoing bolts:	4
No. of tapped holes / side:	16
Bolt size:	M27
Depth of tapped holes:	28

Item / Pos.	Qty / Amt	Description / Benämning	Dimension	Material	Article number / Ref. Artikelnummer / Ref.
Designed by - Datum / OR 100117	Drawn by - Datum / MB	Approved by - Datum / - -	General tolerance / m	General tolerance / K	General part. tolerance / Scale / 1:20
<div style="display: flex; align-items: center;"> <div> <p>Title / Titel</p> <p>HGA-600-P-TY-MH100 PN10 with bill of material</p> <p>File name / Filnamn</p> <p>DD-0889</p> </div> <div style="margin-left: 20px;"> <p>Drawing number / Ritningsnummer</p> <p>DD-0889</p> </div> <div style="margin-left: 20px;"> <p>Sheet / Ark</p> <p>1/1</p> </div> </div>					